



sign up for an electronic copy at:

**[www.keysmagazine.co.uk](http://www.keysmagazine.co.uk)**

# towns

BATHROOMS

Design. Inspire. Indulge.



Book an appointment to visit our showroom  
to design your dream bathroom.

01732 350911  
**[townsbathrooms.co.uk](http://townsbathrooms.co.uk)**



# From the Church

## Love That Lasts Longer Than Valentine's Day

February arrives wrapped in red.

Shop windows filled with cards, chocolates, and carefully chosen words about love. For a few days each year, love is advertised in many places, in windows of shops selling cards, offerings of Valentine gifts packaged neatly, and tied with a ribbon. And yet, once Valentine's Day has passed, many people might be left with a quieter question: is this really all love is?

Romance has its place. Attraction, chemistry, excitement, these are gifts. But they are also fragile. They can often rise and fall with mood, season, health, and circumstance. The danger comes when we confuse the feeling of love with the substance of love, and assume that when the feeling fades, love itself must be gone.

The Christian tradition has always made a careful distinction here. Love, at its deepest level, is not primarily a feeling, it is a commitment.

This kind of love shows itself not in grand gestures but in faithfulness. In staying when leaving would be easier. In listening when it would be simpler to walk away. In choosing the same person, the same community, the same promise, again and again, even when the glow has dimmed.

Anyone who has been married for more than a few years knows this truth. Real love costs something. It requires patience, forgiveness, and the willingness to be changed by significant others. The same is true of friendship, family, and community. Love that lasts is not effortless, it is

formed slowly through shared time, shared wounds, and shared hope.

That is why love can be so frightening. It challenges us. To love deeply is to risk disappointment, grief, and loss. But to avoid love altogether is to settle for something safer, and ultimately far lonelier.

Christian faith speaks of love in this deeper sense, not as sentiment, but as a covenant. A covenant is not a contract based on mutual benefit; it is a promise to remain faithful even when the benefits are not obvious. It is the decision to belong to one another for the long haul.

This is how the Bible speaks of God's love.

God's love is not impulsive or flashy. It does not arrive with fireworks and vanish with the morning light. It is patient. Steady. Enduring. A presence that remains even when we are weary, distracted, or unsure what we believe. It is love that does not withdraw at the first sign of struggle.

Love is not limited to romance. It is found in friendship that refuses to give up, in communities that hold one another through challenging circumstances and in a God who does not abandon unfinished people.

Valentine's Day reminds us that love is desirable. Faith reminds us that love is durable.

And perhaps the most hopeful message of all is this: the kind of love that truly lasts is not something we must manufacture on our own. It is something we learn, slowly and imperfectly, as we allow ourselves to be loved first.

**Rev Tim Saiet**



# ST JOHN'S CHURCH - Directory

**Tel: 01732 833 596    Website: [www.stjohnshildenborough.co.uk](http://www.stjohnshildenborough.co.uk)**

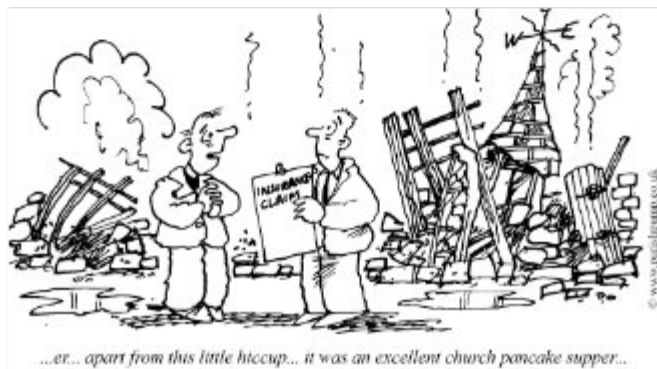
Please ring the church office or email any time, if you would like to discuss any pastoral or administrative matter.

Office Hours - Monday to Friday 10am till 4pm

Role	Name	Contact Details
Vicar	Rev Tim Saiet	07973 136 968 <a href="mailto:tim@stjohnshildenborough.co.uk">tim@stjohnshildenborough.co.uk</a>
Children and Youths Pastor	Lisa Glasscote	<a href="mailto:lisa@stjohnshildenborough.co.uk">lisa@stjohnshildenborough.co.uk</a>
Church Administrator	Emma Joynson-Hicks	01732 833 596 <a href="mailto:office@stjohnshildenborough.co.uk">office@stjohnshildenborough.co.uk</a>
Church Volunteers		
Lay Readers	Trevor Long	07513 420 509
Warden	Vacant	01732 833 596 <a href="mailto:office@stjohnshildenborough.co.uk">office@stjohnshildenborough.co.uk</a>
Treasurer	Rich Lake	07579 210 122 <a href="mailto:treasurer@stjohnshildenborough.co.uk">treasurer@stjohnshildenborough.co.uk</a>
Safeguarding	Kate Lake	07579 821 956 <a href="mailto:safeguarding@stjohnshildenborough.co.uk">safeguarding@stjohnshildenborough.co.uk</a>
Church Centre Bookings	Cynthia Fawcus	01732 833 397 <a href="mailto:cynthia@stjohnshildenborough.co.uk">cynthia@stjohnshildenborough.co.uk</a>
Foodbank and Warm Hub	Denise Netherton	07942 148 175 <a href="mailto:denise@stjohnshildenborough.co.uk">denise@stjohnshildenborough.co.uk</a>
Archivist	Howard Dolling	07876 451 168
Keys Magazine		
Editor	Rob Mansfield	07515 819 860 <a href="mailto:editor@keysmagazine.co.uk">editor@keysmagazine.co.uk</a>
Deputy Editor	Claire Rawlinson	01732 834 896
Distribution	Clem Giles	01732 833 543 <a href="mailto:clemgiles@hotmail.com">clemgiles@hotmail.com</a>
Advertising	Liz Ridley	<a href="mailto:advertising@keysmagazine.co.uk">advertising@keysmagazine.co.uk</a>

## What's on in February?

Church Services	
Sunday 9.15am – 10.30am Communion 3 <sup>rd</sup> Sunday of the month	A contemporary service with a programme for children and youth. Breakfast is served from 8.45am and everyone is welcome.
Sunday 11am – 12.15pm	A more traditional service with hymns, regular Holy Communion.
Tuesday 11.15am – 12 noon	Morning prayer – a peaceful time for connection with God.
Community	
<b>Wednesday 4 February</b> 7.30pm in the Church	<b>Prayer &amp; Praise</b>
<b>Monday - weekly</b> 10-11.45am Church Centre £3/family	<b>Bright Sparks Toddler Group</b> A fun filled haven for little ones providing a safe space for play and a chance for carers and parents to connect.
<b>Tuesday - weekly</b> 11.30am -1pm, weekly Church Centre	<b>Community Larder</b> For people who need a helping hand with some essentials. Donations gratefully accepted of non-perishable food in jars and cans.
<b>Wednesday 11 February</b> 11am in the Church Centre (Second Wednesday of the month)	<b>Forget-me-not Café</b> Whilst some of those who come to the café live with dementia, others may have memory loss or care for a person with dementia. Join us for coffee and cake.
<b>Wednesday - weekly</b> 12-2pm, Church Centre	<b>Warm Hub</b> Free homemade soup & bread roll, desert, tea & coffee. All welcome.
<b>Thursday &amp; Friday</b> 9am – 2pm Church Centre	<b>Angel Café</b> A welcoming space for all ages, perfect for a delicious treat and a chat. <b>Closes during school holidays.</b>
<b>Saturday 14 February</b> 9.30am-11am, Church Centre	<b>Who let the Dads out?</b> Play time for Dads and kids up to 6, soft play and breakfast included.
Children & Young People	
<b>Sunday</b> 9.15-10.30am Term time only	<b>Generation Creation</b> For primary school aged children and young people years 6 and above. Start in the church and move to the Church Centre.
<b>Sunday 8 &amp; 22 February</b> 5-7pm in the Church Centre 2 <sup>nd</sup> and 4 <sup>th</sup> Sunday of the month	<b>HIVE Youth Group</b> For school years 6-13.





# BRIGHT SPARKS

## Baby and Toddler group



**Mondays during term time,  
10:00- 11:30am.**

For more information contact  
[lisa@stjohnshildenborough.co.uk](mailto:lisa@stjohnshildenborough.co.uk)



# The Hive

## Youth Group

**For school year  
6-13  
FREE**

**Saturday 7<sup>th</sup> February  
PANTOMIME**

**Meet at 2:10pm at  
St. John's Church Centre.**

To book a place please email  
[lisa@stjohnshildenborough.co.uk](mailto:lisa@stjohnshildenborough.co.uk)

**This visit is instead of meeting on the Sunday  
this week.**

**All youth leaders hold a valid DBS**





Wide range of  
kids play  
equipment



# WHO LET THE DADS OUT?

**2026 Dates.**

**Jan 3<sup>rd</sup>, Feb 14<sup>th</sup>, Mar 7<sup>th</sup>, April 4<sup>th</sup>,  
May 2<sup>nd</sup>, June 6<sup>th</sup>, July 4<sup>th</sup>, Aug 1<sup>st</sup>,  
Sep 5<sup>th</sup>, Oct 3<sup>rd</sup>, Nov 7<sup>th</sup>, Dec 5<sup>th</sup>.**

**£3 per family; includes hot breakfast  
roll and refreshments**

Meet other  
local Dads and  
have fun

**9:30-11am**

**Church Centre, Foxbush TN11 9HT**

For  
children  
aged 0-6

# PRAYER CHAIN



**The Prayer Chain team prays everyday**

Requests for prayer can be made to  
Cynthia Fawcus on 01732 833 397 between 6-7:30pm or at  
[cafawcus@hotmail.com](mailto:cafawcus@hotmail.com).

**Emergencies any time**

When Cynthia is not available, please contact Elizabeth Myers on  
01732 833827

**ST JOHN'S CHURCH**  
HILDENBOROUGH



## **Contact us**

Church Office  
Church Centre  
Foxbush  
Hildenborough  
TN11 9HT



01732 833596



[office@stjohnshildenborough.co.uk](mailto:office@stjohnshildenborough.co.uk)

**Church Centre bookings:**

[cynthia@stjohnshildenborough.co.uk](mailto:cynthia@stjohnshildenborough.co.uk)



# REPAIR 2026 CAFE Tonbridge



## REPAIRS OFFERED

Electrical : Electronics : Mechanical  
Wood : Clothing : Textiles : Sharpening

**Sat 10 January**  
**Sat 14 February**  
**Sat 14 March**  
**Sat 11 April**  
**Sat 9 May**

**10am-12:30pm**

Last repair accepted at 12:00pm  
or when capacity has been reached

**FREE** Voluntary contribution welcome

**ENJOY** Refreshments at the St Stephen's Cafe

**St Stephen's Church**

Waterloo Road, Tonbridge TN9 2SW



tonbridgerepaircafe.uk FB: @tonbridgerepaircafe IG: @tonbridge.repaircafe  
Email: tonbridgerepaircafe@gmail.com - Tel: 07470 141035



# Forget-me-not Cafés



*Companionship over a cuppa*



Café. It was a cold crisp morning but that didn't stop our patrons coming out for coffee and cake and being entertained by Santino and his guitar. Santino has visited the café on several occasions and always has a good repertoire of songs that everyone can join in and sing along to.

January has been a difficult month with regard to knowing whether we have water coming out of our taps or not. A reminder to those of a "certain age" that you can contact your utility providers and ask to be put on their register which will give you priority and help if you are affected. The Priority Services Register is free to join and it helps utility companies for energy supplies, electricity, gas and water look after their customers who are vulnerable. If your water supply has stopped the water company should deliver water to you rather than you having to visit the water stations. Ask

your suppliers to put you on their register.

Whilst some of those who attend the Café live with a dementia diagnosis, others have mild memory loss, others care for a person with dementia. We meet at 11.00 am – 12.30 pm on the second Wednesday of the month in the Family Room of the Church Centre at St. John's Church Hildenborough. There is plenty of free parking and disabled facilities on site.

The Café is also open to anyone who would like to get out of the house for a couple of hours and meet other people for some conversation. If you are feeling lonely and would like someone to chat to please come along.

If you would like more information on the Forget-me-Not Cafés or would like to be put on the mailing list for the monthly programme of all the Cafés please contact Elaine on [forgetmenot.sadfc@gmail.com](mailto:forgetmenot.sadfc@gmail.com) or 07946 534 476.

**Julie Rhodes**

## Would you like to write something for Keys Magazine?

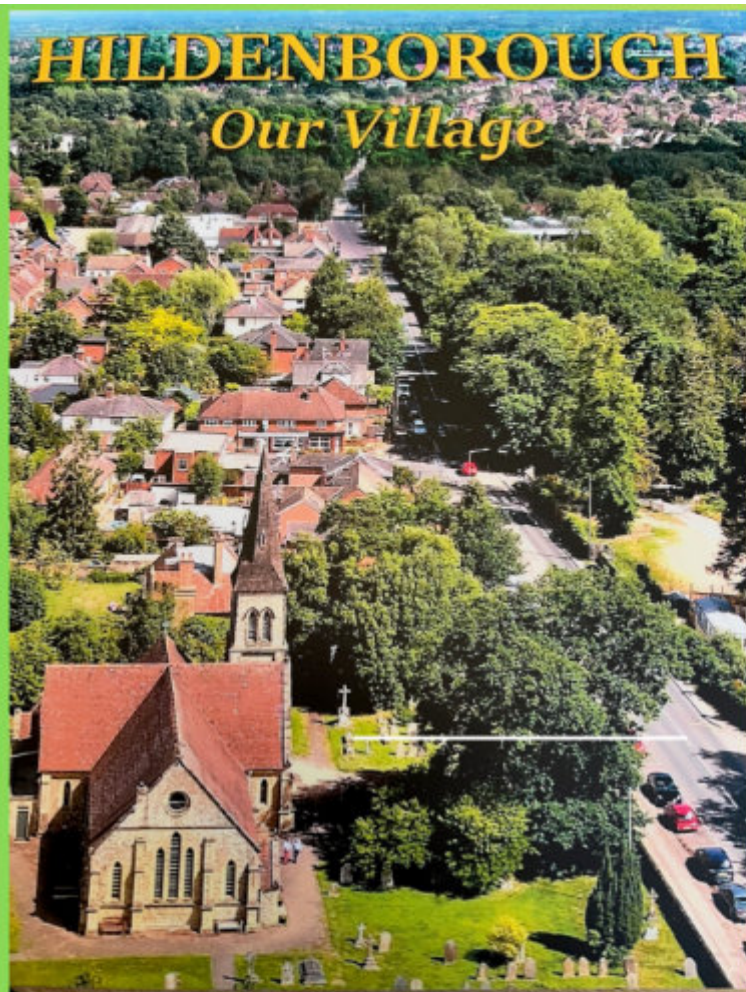
Do you enjoy writing, or have something you want to share with the community? I'm always looking for new ideas for the magazine and so please get in touch to pitch your ideas. You can email me using the address: [editor@keysmagazine.co.uk](mailto:editor@keysmagazine.co.uk) or come see me at the Farmers' market on the first Tuesday of the month.

If you volunteer for an organisation, I'd love to feature you in our volunteer interview. I've got spaces available for later in the year. You can use it to raise awareness for a cause or to try and attract new volunteers.

**Rob Mansfield**

# **HILDENBOROUGH**

## *Our Village*



**HILDEN-  
BOROUGH  
OUR  
VILLAGE  
£20**

**Find out the  
history of  
the village,  
its character  
and key  
people.**

**FOR SALE  
HILDENBOROUGH  
OUR VILLAGE  
£20**

**Available from the Church office**  
**01732 833596**  
**[office@stjohnshildenborough.co.uk](mailto:office@stjohnshildenborough.co.uk)**

Hildenborough History Society presents *Hildenborough — Our Village*, a history of the village from when the settlement was first documented, through its formation as a parish, up until today; liberally illustrated with photographs, maps and artwork.

Discover the hidden histories, untold stories and forgotten anecdotes from this charming corner of Kent.



## What's on in and around our village?

Arts and culture are flourishing in the local community often with little by way of external funding - please read through the following events and try and get to one if you can!



WEST KENT AUTISM PARENTS' SUPPORT SOCIETY  
INVITE YOU TO CONNECT WITH US

### PARENT NETWORK SESSIONS

THE FAMILY ROOM, ST JOHNS CHURCH,  
TONBRIDGE RD, HILDENBOROUGH



MONDAYS IN 2026:

12 JAN, 9 FEB

9 MAR, 13 APR

11 MAY, 8 JUN

12-1.30PM

TEA/COFFEE  
£2 DONATION,  
BRING PACKED  
LUNCH

FIND OUT MORE -  
[INFO@WKAPSS.ORG.UK](mailto:INFO@WKAPSS.ORG.UK)



## THE OAST THEATRE, TONBRIDGE

"HUMBLE BOY" by Charlotte Jones 7<sup>th</sup> March – 14<sup>th</sup> March 2026

"Humble Boy" by Charlotte Jones is a multi-award-winning comedy with the intensity of family emotions, the search for the meaning of life and echoes of "Hamlet".

*'Rich, original, intelligent, funny and touching, I can't recommend this lovely play too highly'.* The Daily Telegraph. *'A seriously wonderful play'.* The Sunday Times

Come along and see for yourself. It is definitely a play not to be missed!

Performances: 8 p.m. (Sunday 3 p.m.) - Tickets: £14

Book online at [www.oasttheatre.com](http://www.oasttheatre.com) - Credit card bookings 0333 666 33 66 (booking fee applies)

OFFICIAL

# Model Railway Exhibition



**Tonbridge Model Railway Club**



## **The Angel Centre, Tonbridge**

The Angel Leisure Centre is 5 minutes walk from  
Tonbridge Railway Station in Angel Lane, TN9 1SF

**Saturday, 21<sup>st</sup> February 2026**

**10.00 am – 5.00 pm**

**Adults £8, Children under 16 FREE**

Around 20+ working layouts plus trade support

Light refreshments available

For further information contact: Jon Gettens on 01959 523840, e-mail: [tonbridgemrc@yahoo.co.uk](mailto:tonbridgemrc@yahoo.co.uk)  
or visit our website: [www.tonbridgemrc.com](http://www.tonbridgemrc.com)



looking for a volunteer to run our Market media pages every week. Could this be you? We are a friendly bunch and if you think you can help please contact our Manager Nick.

Our first Market of the New Year was on the 6<sup>th</sup> January and it was a very cold, icy morning but this didn't stop our stallholders or our customers from coming to the Market. Throughout this year we will be having our regular stalls but hopefully will also have some new stallholders as well. If you would like the opportunity to have a stall please contact the Market Manager, Nick, on the email address below. You can also follow us on social media where most weeks there will be a list of all the stalls that are expected at the Market. We are open from 8.30am to 11.00 am every Tuesday at the Hildenborough Village Hall in Riding Lane. We look forward to seeing you, there is a lot to browse and buy, and finish off with a cup of tea or coffee in the Café.

We are also looking for some volunteer helpers. We are always in need of people to set up and take down the Market. Are you good with social media as we are also

During 2025 you may have seen one of our regular helpers, Dot, who as well as clearing tables and serving tea and coffee has run a stall with a variety of knitted items for sale. Dot has knitted cardigans and toys of various shapes and sizes including Easter chicks with cream eggs and Christmas decorations. The hairdressers in the village, Snippets, has very kindly sold some of the items also. Dot has donated all the proceeds from her stall and Snippets during 2025 to the Tonbridge Dementia Friendly Community and has raised a record £650. Well done Dot!

We continue to have our Gift Vouchers, the perfect present, for you to purchase. Look out for our special Market shopping bags and pens that are available every week to buy.

Contact the Market manager: Nick Aldridge on: - [managerhildenboroughfm@gmail.com](mailto:managerhildenboroughfm@gmail.com)

### Hildenborough Gardeners' Society

The year is slowly coming to life, though, as usual, we have a wet and soggy start. Our first talk is on Feb 18<sup>th</sup>, by Simon Sutcliffe of How Green Nurseries, on "New Perennial and Grass Introductions". The start is at 7 p.m. in the Village Hall. Our garden store reopens on February 28<sup>th</sup> with good stocks of composts, farmyard manure, fertilizers and pest controls, to enhance your garden for 2026. The Spring Show is on Saturday, March 28<sup>th</sup>, and we encourage everyone to try and enter

something from your garden or kitchen – there are lots of possible classes for entries.

Membership for the year will be £7, and can be paid at the store or at any of our talks and shows. Hard copies of handbooks will be available to members for collection, and will be available online too.



*David Haugh*



**Evening WI:** Our January meeting was our New Year party. As usual we started the meeting with some WI business and we also discussed the resolutions for the year, which we all then voted on.

Following the formal part of the evening we had the opportunity to catch up and chat about our news, and all took part in a general knowledge quiz. Sheila won which was lovely as she was also celebrating her birthday. We all shared some tasty cakes and biscuits with a welcome drink and then before we finished, we all selected a mystery item from the bran tub.

Our next meeting is **Tuesday 10<sup>th</sup> February 2026** when we will be having a

talk from Jo Hall, from 'Bazaar'.

Hildenborough WI meets once a month and gives members the opportunity to meet new people, learn new skills, and have fun. We always welcome new members, so please feel free to drop in and say hello.

**Please note our meeting time, we meet in the family room at the Church Centre at 7.15pm for a 7.30pm start.**

**Lorna Stapley-President**



## New Go Bus 4 serving Sevenoaks, Weald, Hildenborough and Tonbridge

We are introducing a new service, Route 4 between Sevenoaks and Tonbridge. The new route will run from Sevenoaks via Riverhill and Hildenborough to Tonbridge.

Route 5 will have a slightly revised timetable to improve timekeeping.

The new 4 & 5 timetable is below:

**go**

### Sevenoaks to Tonbridge

Monday to Friday									Saturday			Sunday			
Route No:	5	4	4	5	4	4	5	4	5	5	5	401	401	401	401
Sevenoaks, Bus Station	0905	0945	1045	1135	1245	1345	1410	1645	0905	1135	1445	0800	1000	1200	1430
Weald Village, Forge	0919	▼	▼	1149	▼	▼	1424	▼	0919	1149	1459	0808	1008	1208	1438
Hildenborough, Church	0925	0957	1057	1155	1257	1357	1430	1657	0925	1155	1505	0814	1014	1214	1446
Tonbridge, Castle	0935	1007	1107	1205	1307	1407	1440	1707	0935	1205	1515	0822	1022	1222	1452
Tonbridge, Rail Station / Quarry Hill Parade	0939	1011	1111	1209	1311	1411	1444	1711	0939	1209	1519	0824	1024	1224	1454

### Tonbridge to Sevenoaks

Monday to Friday									Saturday			Sunday			
Route No:	5	4	4	5	4	4	5	4	5	5	5	401	401	401	401
Tonbridge, Rail Station / Quarry Hill Parade	0940	1015	1115	1215	1315	1415	1450	1715	0940	1215	1530	0836	1036	1306	1506
Tonbridge, Castle	0944	1019	1119	1219	1319	1419	1454	1719	0944	1219	1534	0838	1038	1308	1508
Hildenborough, Church	0950	1025	1125	1225	1325	1425	1500	1725	0950	1225	1540	0845	1045	1315	1515
Weald Village, Forge	0957	▼	▼	1232	▼	▼	1507	▼	0957	1232	1547	0851	1051	1321	1521
Sevenoaks, Bus Station	1009	1039	1139	1244	1339	1439	1519	1739	1009	1244	1559	0900	1100	1330	1530

## The Night Sky - February

The cold frosty nights are those when the brilliant winter constellations are seen at their very best. Early in February, Orion can be seen due south at 9pm but if you wait patiently until the middle of the month then it can be found in the same place at 8pm. So, it follows that by the end of this month Orion is again due south but now it is there at 7pm. The fact that it is at its best so early in the evening tells us that winter is almost over as does the sight of Ursa Major, the Great Bear, standing on its tail in the north.

Most people refer to Ursa Major as the plough but this is incorrect because the “asterism” known as the plough is just a part of the Great Bear. The word asterism describes a shape (usually an everyday one) made by a number of stars. The Square of Pegasus is one such, as is the Summer Triangle. The stars don't have to belong to a single constellation, as is the case with the plough, but can be composed of stars from two, or more, constellations. In the Square of Pegasus there are two constellations involved (Pegasus and Andromeda) whilst the Summer Triangle requires contributions from three constellations (Cygnus, Lyra and Aquila).

Orion is, of course, the hunter so around him you would expect to find his dogs Canis Major and Canis Minor as well as Lepus which is the hare they could well be chasing. North east of Orion is Gemini, the twins, and to the north west is Taurus, the bull.

Canis Major contains the brightest star in the night sky, Sirius. Strangely, it isn't a particularly luminous star, it's simply that it's close to us in astronomical terms, just 8 light years away. Compare that to Rigel, in Orion, which is the seventh brightest star but is 860 light years distant!

Incidentally, a light year is equal to  $9\frac{1}{2}$  trillion kilometres. It's rather a shame that Sirius doesn't rise higher as seen from the UK because then its brilliance would be all the more striking. If you do have trouble identifying it, just draw a line through the three stars in Orion's belt and on towards the horizon. The line up isn't perfect but it will pass close to Sirius.

Canis Minor is a small constellation and is usually indicated by just two stars, one of which is the bright star Procyon. Above Canis Minor are the celestial twins, Gemini with the bright stars of Castor and Pollux indicating their heads.

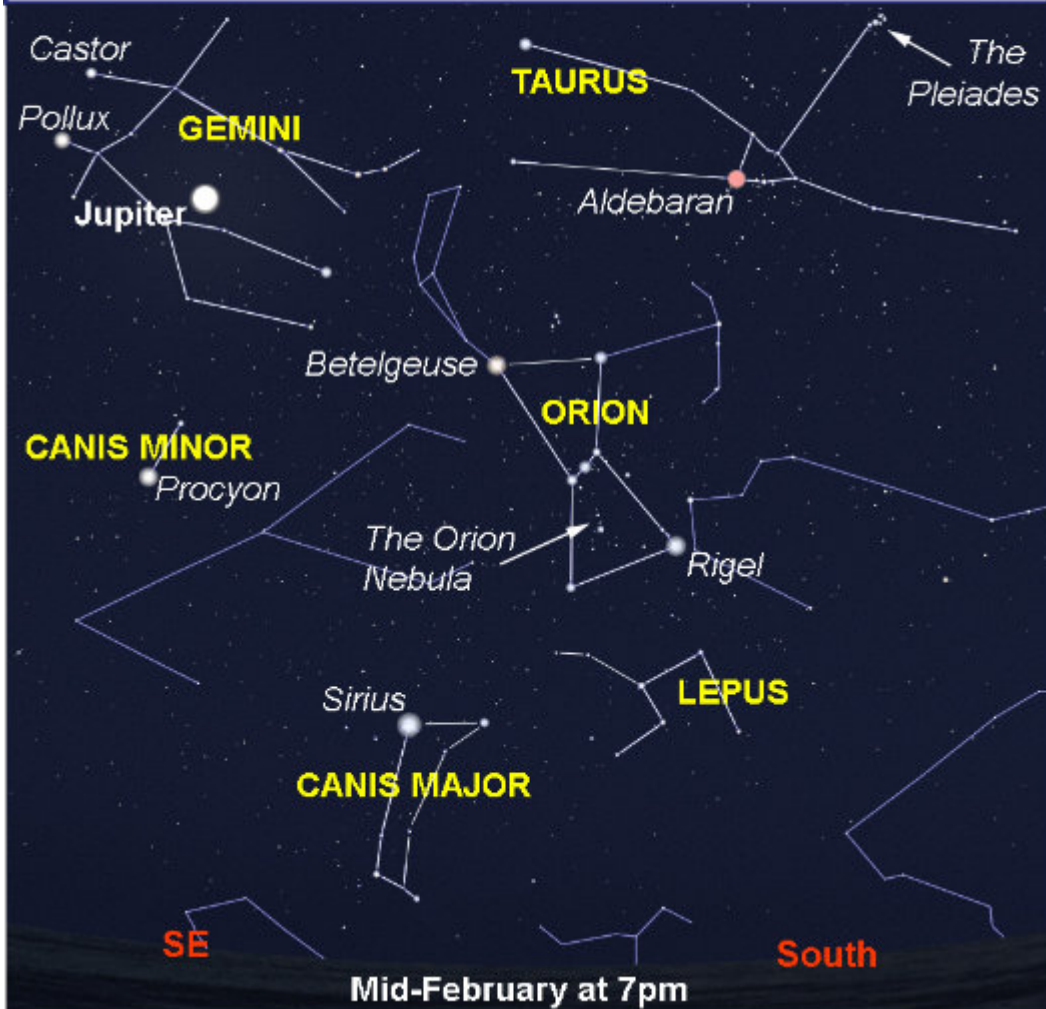
Extending a line upwards through the belt stars will bring you close to

Aldebaran, the red eye of Taurus the bull. Extend the line onwards and you narrowly miss the Pleiades cluster known also as the Seven Sisters. The map shows all of the above. Constellations names are in bold; star names are in italic.

On 19<sup>th</sup> February, Mercury is as far from the Sun as it can appear to be, so from the 12<sup>th</sup> to the 25<sup>th</sup> look low down in the WSW

from 5:45 onwards. The Sun will have set by then **BUT** if you use any optical aid to search for it do be absolutely certain that it has set or you risk serious eyesight damage if you accidentally look at the Sun. If you catch sight of a brighter object much closer to the horizon, that will be Venus.

**Brian Mills FRAS**





# T.M.B.C. News

## TMBC Local Plan.

There is a rather large elephant in the room that needs addressing. I thought I would use this report to address a local plan matter that will, in the end need consideration.

A number of residents and local groups have written to the Leader of the Council expressing their dissatisfaction at the proposed allocations of proposed housing for Hildenborough Ward in the local plan.

Some are rightly are against any building whatsoever and some OK with one area but not the other.

This local plan is like nothing I have seen before during my time on the Council; it is a major step change for TMBC.

For the whole of the Borough, 19,000+ houses, is going to impact the community one way or another.

So, we do have a problem, and that is, if we don't want houses built on the identified sites, where are they going to be built? That land must be identified. The Parish Council commissioned a report in response to the local plan Regulation 18 Consultation. In that report they state that they are totally against allocation HI2 (Stocks Green Road) and ask for that allocation to be removed from the local plan, I have to mention on page 21, in relation to the old Fosse Bank application it states that the 'parkland required protecting and those new homes must be built elsewhere', but this will apply to any removal of land allocation, where are these homes to be built?

(I give HI2 as an example, the Parish Council are not comfortable with the

other land allocations in the consultation.)

So, someone at some time, either TMBC members or others, should the local plan not be completed, by the time of Local Government Re-organisation will have to decide, whether to support the plan or refuse it, and refusing it brings big problems because we certainly do not want a Government inspector marking out land and declaring build here instead of there.

Planning is about control, control of what the site, development, and eventual outcome appear when completed.

Mind you with the current water shortages and supply problems locally, will there be enough water for the entire houses required, Kent wide? (The water supply companies are not consultees in planning applications.)

If you would like a copy of the Parish Council Report please contact the Clerk.

## Contact me.

Please do not hesitate for one minute, about contacting me on Borough Council matters. If you would prefer a home visit in private, just let me know.

## Council Meetings.

Please remember Council meetings are still streamed on You Tube, however public attendance is permitted in the Council Chamber.

*Cllr Mark Rhodes*

### **Borough Councillors**

Kath Barton

c/o TMBC, Gibson Building, Gibson Drive,  
Kings Hill, ME19 4LZ

**Kath.Barton@tmbc.gov.uk**

Mark Rhodes 01732 914 166

39 Cranford Road, Tonbridge

**mark.rhodes@tmbc.gov.uk**

**TMBC - 01732 844 522**

### **Kent County Councillor**

Harry Rayner 03000 421 606

**harry.rayner@kent.gov.uk**

Contact the Parish Council via

**clerk@hildenboroughparishcouncil.gov.uk**

or by telephone (07818 329 029)

**Hildenborough PC, Riding Lane,  
Hildenborough, TN11 9HY**

### **From our MP: Tom Tugendhat**

At Christmas many of us were lucky to spend time with family, friends and our loved ones. For some of us, distance makes that harder and that's where technology comes in, but that relies on having fast and reliable broadband.

That's a long way from universal. As so many of us know, there are still many areas in our community where the signal is appalling and a very real challenge for those of us living here.

Last year I started a survey to understand the extent of the problem affecting our rural villages. I have had around 1,000 people get in touch with me. Thank you if you have shared your experiences. It has informed my work and allowed me to map best where the issues are.

The frustration of having no data, even when your phone indicates you should have coverage, can be a daily struggle. This affects us whether we are making calls from our phones or using unreliable Wi-Fi.

The technology phone companies use allows for high-speed capacity across our area. Phone companies can make our signal better if they want to invest in our community. In every meeting I have held with operators since launching the survey, I have made this point. It is simply a failure to act from the companies who provide the service. That's why we need to keep the pressure on them.

Whilst EE and VodafoneThree are both expecting significant upgrades in the next few years, Virgin Media O2 are working on timelines of 8 years. This is far too long to wait.

I've escalated this in Parliament because, sadly, it isn't just our community affected. Rural areas across the country suffer from slow broadband and poor connectivity. Even in our towns, the issues are seen. Many people can't even get a phone signal to pay for parking or access shopping apps in the middle of Tonbridge. Train journeys are often disrupted by lost signal.

As I continue to build the picture to present a case to the mobile phone companies, I would appreciate your help in telling me your experiences. Please fill out the form on my website and share it with neighbours so we can keep the pressure up, and secure the improvements our community deserves. You can find it at [www.tomtugendhat.org/mobile-phone-survey](http://www.tomtugendhat.org/mobile-phone-survey)

You can also share your views with me as follows:

E-mail – [tom.tugendhat.mp@parliament.uk](mailto:tom.tugendhat.mp@parliament.uk)

Phone – 01732 441 563

Post – 130 Vale Road, Tonbridge, Kent,  
TN9 1SP

Website – [www.tomtugendhat.org](http://www.tomtugendhat.org)

Facebook, Twitter and Instagram -  
[@tomtugendhat](https://www.facebook.com/tomtugendhat)

**Tom Tugendhat**



## Meet the volunteer – Heather Russell-Kay with MS Society Support

Hi, I'm Heather Russell-Kay and I've lived in the village over 6 years, with my partner Sid, and our dog Willow.



I volunteer with MS Society Support, which I have been doing for nearly ten years. The role involves being a friendly point of contact for people affected by MS locally, helping them feel less alone, and signposting them to support, information, and MS Society services when needed.

The hours vary week to week but it's made me more open, compassionate, and confident, and taught me the value of asking for help and working with others to ensure people get the right support.

The best thing is those moments when someone feels a little less alone, and I know I've made even a tiny positive difference to their life.

The hardest part is when someone is really struggling and I know I can't fix it, even though I wish I could.

If you'd like to know more, the best way to get in touch with me is via my MS Society email: [heather.russell-kay@groups.mssociety.org.uk](mailto:heather.russell-kay@groups.mssociety.org.uk)

What is an interesting fact about you? I love dragons, and I've recently published my first book!

If you were Prime Minister for the day, what would be the first law you passed? If I'm honest, I'd probably keep away from party politics for the day, but I would use

it to make sure people feel more understood, listened to, and cared for.

What is your favourite section of Keys Magazine? This one! I love reading about the amazing people in our community and what they're doing locally.

Which 3 people, dead or alive would you invite for a dinner party and why? J.R.R. Tolkien and William Shakespeare, to talk about the incredible worlds they created, and Mary Shelley, because I'm fascinated by the way Gothic fiction can shine a light on human nature.

If you could have a superpower, what would it be and why? I'd choose the power to spread kindness, because everyone deserves to feel safe, seen and supported.

—

Alongside volunteering, I've also recently self-published my first book, *Whispers Through the Forest*.

It's a collection of fairy-tale-inspired stories written from lived experience of chronic illness, exploring invisible symptoms and the quieter

emotional realities that often go unseen. My hope is that it helps give people with chronic illness a voice, while also offering understanding to those who may not know what it's like. All proceeds from the book are donated to charity.

It's available to buy online, can be ordered through any bookshop, or borrowed from the local library.





# Men's Mind Gym

**A 6-week mens mental fitness course**



**Reconnect with yourself.**

**Build resilience, confidence, and inner peace.**

Join a supportive group of men for a practical, evidence-based journey into mental fitness.

## What you'll explore

On Sunday evenings, 6-8pm,  
in Tonbridge:

- Stress & your nervous system
- Boundaries, values & purpose
- Connection & communication

## Register your interest

Scan the QR code to register  
your interest.

- 6-week in person training course
- £199 (subsidised places available)



For any questions, please email:  [hello@wearemend.org](mailto:hello@wearemend.org)

# Centre Piece

From Hildenborough Parish Council - <https://www.hildenboroughparishcouncil.gov.uk/>

Contact: Louise Jenner (Clerk) - 07818 329 029 [clerk@hildenboroughparishcouncil.gov.uk](mailto:clerk@hildenboroughparishcouncil.gov.uk)

Postal Address: Pavilion and Recreation Ground, Riding Lane, TN11 9HY

The Parish Council's green post box is located at the rear of the Pavilion Building

## Recreation Ground Update

There's lots happening at the Recreation Ground, and we're excited to share the latest progress with you.

## New Accessible Footpath

Work has now begun on the new footpath around the Recreation Ground. The path is being completed in sections and will have a smooth tarmac finish, making it fully accessible for all users—whether you're walking, pushing a buggy, using a wheelchair, or simply enjoying a gentle stroll.



## New Play Equipment Coming Soon

The brand-new play equipment has been installed and is already transforming the park. The final stage—laying the new play-safe flooring and adding the thermoplastic graphics—is underway. Once the safety inspections are complete, we expect the play area to be open and ready for families to enjoy **by the end of January**.

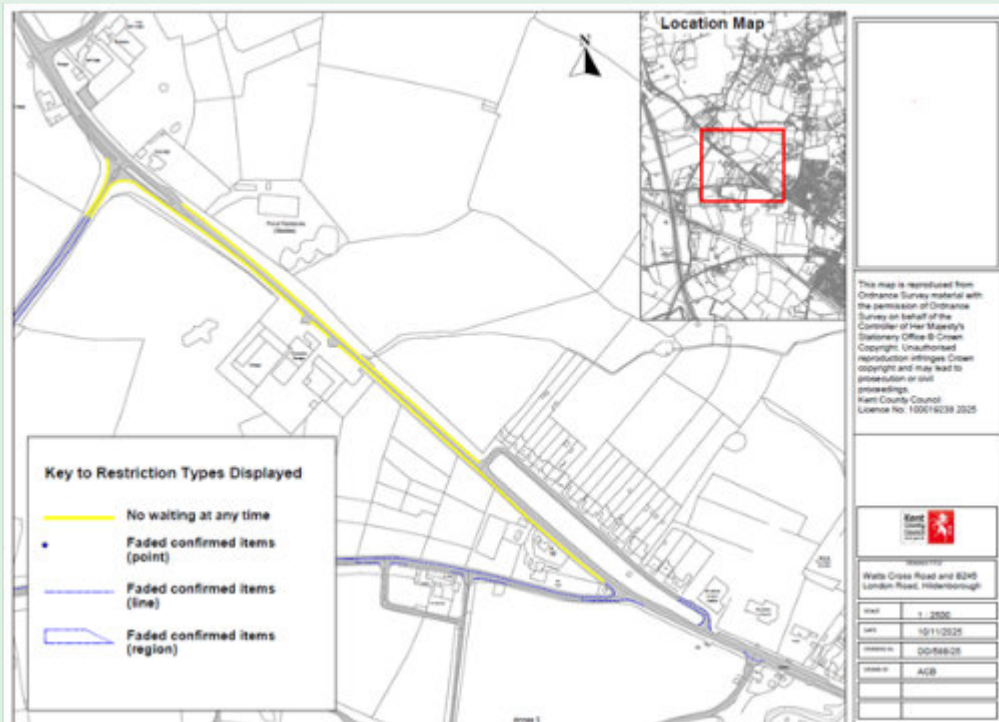
## Sensory Boards for West Wood Park



We're also pleased to confirm that new sensory boards will be added to West Wood Park. These will offer a fun, interactive experience for younger visitors and are scheduled for installation in **February**.

## A Quick Request

To help the contractors work safely, please avoid parking in front of the fenced-off compound or blocking the barrier to the field. Your cooperation makes a real difference.



## Double Yellow Lines – Safety Improvements Underway

We're pleased to share an update on the new double yellow line installations across the parish.

### Leigh Road & Riding Park

New double yellow lines have now been installed at the junction of Leigh Road with Stocks Green Road and at Riding Lane with the junction of Riding Park. These improvements are designed to keep sightlines clear, reduce congestion at busy times, and improve safety for all road users.

### B245 (Upcoming)

Double yellow lines are also scheduled for the B245. As this is a longer stretch of road, the work is weather-dependent, but

it will be completed as soon as conditions allow.

We look forward to seeing the positive impact they bring to the community.

If you have any concerns or suggestion please contact the Parish Clerk at the below email address.

[www.hildenboroughparishcouncil.gov.uk](http://www.hildenboroughparishcouncil.gov.uk)  
Contact Hildenborough Parish Council Parish Clerk at 07818 329029 or email [clerk@hildenboroughparishcouncil.gov.uk](mailto:clerk@hildenboroughparishcouncil.gov.uk).

The Parish Council's green post box is located at the rear of the Pavilion Building on Riding Lane.

**Louise Jenner**



## Word Search - The Presentation of Christ in the Temple/ Candlemas

Candlemas, 2<sup>nd</sup> February, comes exactly 40 days after Christmas. In New Testament times 40 days old was an important age for a baby boy: it was when they made their first 'public appearance'. Mary, like all good Jewish mothers, went to the Temple with Jesus, her first male child - to 'present Him to the Lord'. Thus, we have the Festival of the Presentation of Christ in the Temple (Luke 2: 22-40). So where does the Candlemas bit come in? Jesus is described in the New Testament as the Light of the World, and early Christians developed the tradition of lighting many candles in celebration of this day.

### Candlemas

Forty

Days

After

Christmas

New

Testament

Important

Age

Baby

Boy

First

Public

Appearance

Mary

Jewish

Temple

festival

presentation

described

light

world

candles

lighting

early

P	B	P	Y	O	D	E	I	B	P	N	N	M	G
T	N	W	F	R	M	L	S	I	A	N	I	H	R
W	T	L	E	T	A	P	R	P	F	B	S	N	S
T	W	T	S	N	D	M	P	O	S	I	Y	A	F
N	F	N	T	A	G	E	R	A	W	D	M	I	A
A	N	O	I	T	A	T	N	E	S	E	R	P	V
D	E	C	V	R	Y	N	J	L	L	S	H	L	R
A	E	A	A	O	T	E	T	D	T	C	Y	I	I
B	T	N	L	P	P	M	N	N	H	R	L	G	T
S	C	D	D	M	S	A	M	T	S	I	R	H	C
E	E	L	B	I	C	T	P	J	G	B	A	T	I
S	W	E	Y	E	A	S	A	H	O	E	E	I	B
A	W	S	Y	A	D	E	T	Y	N	D	F	N	A
P	U	B	L	I	C	T	I	Y	G	C	I	G	G

## Crosswords Clues

### Across

1 'If you love those who love you, what — is that to you?' (Luke 6:32) (6)

4 'They threw the ship's — overboard' (Acts 27:19) (6)

7 The first murderer (Genesis 4:8) (4)

8 He was the head Levite in charge of the singing when the ark of God was brought back to Jerusalem (1 Chronicles 15:22) (8)

9 Samson was noted for this (Judges 16:6) (8)

13 Solicit money or food from passers by (Acts 3:2) (3)

16 What William Booth's Christian Mission became in 1878 (9,4)

17 Alliance of Religions and Conservation (1,1,1)

19 'I will praise your name for ever and ever. — I will praise you' (Psalm 145:1-2) (5,3)

24 Simon had (anag.) (8)

25 Desperate (Deuteronomy 28:48) (4)

26 Elisha witnessed the boy he was seeking to resuscitate do this seven times before opening his eyes (2 Kings 4:35) (6)

27 The belly and thighs of the statue in Nebuchadnezzar's dream were made of this (Daniel 2:32) (6)

### Down

1 'Before the — crows, you will disown me three times' (Matthew 26:75) (4)

2 Relating to the books of the Bible between Acts and Revelation (9)

3 'They have — the Lord out of the tomb, and we don't know where they have put him!' (John 20:2) (5)

4 Belief (5)

5 'Take the following fine spices: ... 250 shekels of fragrant — ' (Exodus 30:23) (4)

6 'Do not — Jerusalem, but wait for the gift' (Acts 1:4) (5)

10 A seer (anag.) (5)

11 'Even there your hand will — me' (Psalm 139:10) (5)

12 The wild variety was part of John the Baptist's diet (Mark 1:6) (5)

13 A non-Greek speaker who was looked down on by civilized people (Colossians 3:11) (9)

14 Famous 1950s musical whose characters included members of

16 Across, — and Dolls (4)

15 The province from which Paul wrote to the Corinthians (1 Corinthians 16:19) (4)

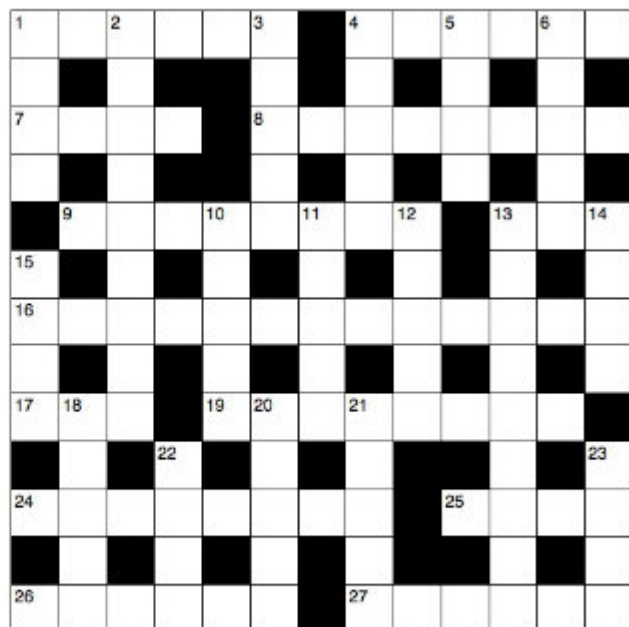
18 'He was standing in the gateway with a linen cord and a measuring — — his hand' (Ezekiel 40:3) (3,2)

20 'Today, if you hear his — , do not harden your hearts as you did in the rebellion' (Hebrews 3:15) (5)

21 The Jericho prostitute who hid two Israelite spies on the roof of her house (Hebrews 11:31) (5)

22 'And now these three remain: faith, — and love. But the greatest of these is love' (1 Corinthians 13:13) (4)

23 'God has numbered the days of your reign and brought it to an end' (Daniel 5:26) (4)



## Sudoku - easy and medium puzzles

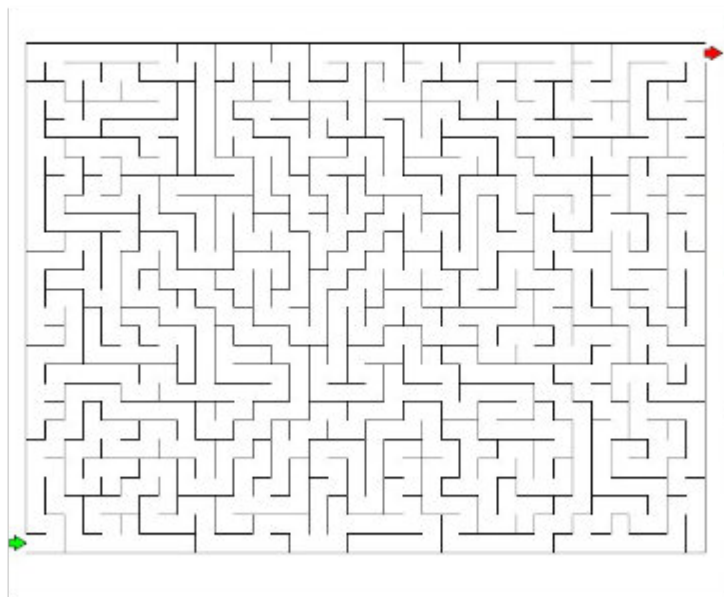
1	9					5		8
	2	6		3	8	1		9
8				7		4		
				9				6
3	4		8		6		1	7
2				1				
		4		8				1
7		3	9	2		6	5	
6		2					8	3

© 2014 KrazyDad.com

							7	2
					9	5		3
6	7			3	2	9		
9				1				
4	1	6					7	9
				6				1
		3	1	8			4	6
2		7	4					
8	4							

© 2013 KrazyDad.com

**Maze - can you find your way from the green arrow to the red?**







Henry is making a real effort for Lent – he's giving up the remote control and walking to the TV



## KEYS ADVERTISING

Please note that the PCC cannot be held responsible for the quality of the services on offer. For any serious complaint, contact our advertising manager.

If you have any compliments on tradesmen or companies, we'd love to hear them too.

# Musical Bumps

Friendly, Fun, age-specific music classes for Babies, Toddlers & Pre-schoolers!



## Hildenborough Special Offer Thursdays!

**Grab a 25% discount!**

\*for the first 10 to book  
Hildenborough classes  
using code JGE963

9.30 Crawlers & Toddlers  
10.15 Family Music age 2-3 yrs  
11am Babies newborn to crawling  
1pm Pre-schoolers age 3-4 yrs  
*plus other days in Tonbridge & Sevenoaks*



QR for info & booking!

[margaret.lewin@musicalbumps.com](mailto:margaret.lewin@musicalbumps.com)



# THE CINNAMON

FINE DINING



ASIAN  
CATERING  
FEDERATION

CERTIFICATE OF  
*Culinary Excellence*

PROUDLY AWARDED TO

**Cinnamon Square**

TONBRIDGE, KENT

IN RECOGNITION AS ONE OF THE

**TOP 100**

**ASIAN RESTAURANTS  
IN THE UNITED KINGDOM  
2025**

★★★★★



PRESENTED AT  
**HOUSE OF LORDS  
WESTMINSTER PALACE**



AN INDIAN RESTAURANT DISTINGUISHED BY MULTIPLE AWARDS

**BEST CHEF OF THE YEAR 2025**

**THECINNAMONSQUARE.CO.UK**

01732 832 944

RINGS HILL HILDENBOROUGH

TAKEAWAY SERVICE AVAILABLE WITH A 10% DISCOUNT



## WEALTH MANAGEMENT

MORTGAGES | INVESTMENTS | PENSIONS



IFA: Rob Mansfield DipPFS

**Investing Basics: Bonds** Last month, we looked at why even "safe" cash carries risk. Today, let's look at a cornerstone of most portfolios: **Bonds (Fixed Income)**.

**What are they?** Essentially, you are the bank. You lend money to a government or company for a set period in exchange for regular interest payments and the return of your original loan.

### How do you gain?

- **Income:** You receive "coupons" (interest payments).
- **Capital Growth:** Bond prices usually rise when market interest rates fall.

### What are the risks?

- **Default:** Where the borrower can't pay you back.
- **Interest Rates:** If interest rates rise, existing bond prices typically fall.
- **Inflation:** If prices rise faster than your interest rate, your "real" return drops.

Using a fund can help spread your risk by buying bits of lots of different bonds rather than going all in on one investment



### Contact Details:

Telephone: 01732 247 360

Website: [www.rootes.co.uk](http://www.rootes.co.uk)

Email: [contact@rootes.co.uk](mailto:contact@rootes.co.uk)

Postal Address:

Rootes Wealth Management,

Riverside House, River Lawn Road,

Tonbridge, TN9 1EP







**BODY  
MENTORS**



## UNLOCK THE BENEFITS OF STRENGTH

INCREASED MUSCLE MASS | FAT LOSS | INCREASED BONE DENSITY  
IMPROVED MOBILITY/FLEXIBILITY | REDUCED RISK OF INJURY  
IMPROVED MENTAL WELLNESS

**STRENGTH TRAINING FOR ALL AGES AND ABILITIES**

Located at Hilden Park Golf, Range and Gym  
Rings Hill, Hildenborough, Tonbridge TN11 8LX

**CONTACT US FOR A FREE CONSULTATION**

[www.bodymentors.co.uk](http://www.bodymentors.co.uk) ☎ 07587007214 ✉ [info@bodymentors.co.uk](mailto:info@bodymentors.co.uk)

**OVENCLEAN**  
The original oven cleaning specialists

Ovenclean will transform your oven and put  
the sparkle back into your kitchen!  
Ovenclean removes grease, fat and  
burnt on carbon deposits from:

• Ovens • Filters • Hobs • Grills  
• BBQs • Ranges • Microwaves • AGAs  
• Extractors • Oven repairs

Call John Denoon on: 07426 553 093  
0800 840 7127 [ovenclean.com](http://ovenclean.com)

## The Hilden Osteo

We can help with:

Back pain  
Neck pain  
Headaches  
Chronic pain  
Sports injuries  
and much more...

Mobile Osteopath in Tonbridge  
and Hildenborough area

☎ 07789 764858

✉ [thehildenosteopath@gmail.com](mailto:thehildenosteopath@gmail.com)

🌐 [www.hildenosteopath.co.uk](http://www.hildenosteopath.co.uk)

## The Active Body Studio Ltd



**We can offer exercise classes or 1 to 1 sessions to:**

- ⇒ Improve strength and mobility
- ⇒ Reduce the risk of falls
- ⇒ Improve postural control and stability
- ⇒ Manage Parkinson's and Multiple Sclerosis
- ⇒ Help with lower back pains and aches
- ⇒ Make movement fun again



For more information and suitability please contact Ela  
call/text on 07969 315113,  
email [studio@activebodystudio.co.uk](mailto:studio@activebodystudio.co.uk)

Qualifications: Level 4 Specialist in Exercises for long term neurological conditions,  
Exercise Referral, OTAGO Program Leader,  
Level 3 Mat Pilates + orthopaedic conditions



future fit  
**TRAINING**

laterLife  
training





*Your local outside experts*

Landscaping-Paving-Driveways

01892 871293

[hodgelandscapes.co.uk](http://hodgelandscapes.co.uk)



## LOCAL LOCKSMITH

**NO CALL-OUT FEE! 24HR SERVICES**

- ✓ **UPVC / DOUBLE GLAZING / PATIO DOORS & WINDOW LOCK REPAIRS.**
- ✓ **JUST MOVED IN ? WHO HAS A KEY ? COMPLETE LOCK CHANGE SERVICE.**
- ✓ **LOCK-OUTS / LOST KEYS / BROKEN LOCKS.**
- ✓ **EMERGENCY LOCK & DOOR OPENING.**
- ✓ **DOMESTIC & COMMERCIAL WORK.**
- ✓ **ALL TYPES OF LOCKS / HARDWARE SUPPLIED & FITTED.**

**Call Paul on:**

**07506 451405**

[graves972@btinternet.com](mailto:graves972@btinternet.com)

**TONBRIDGE, PADDOCK WOOD & SURROUNDING VILLAGES.**

**Paul Graves**  
Locksmith

**Checkatrade**  
Avg Score 9.95 | Over 1200 Reviews  
Checkatrade ID 311650

HELEN BOUCHER BSc (Hons), HCPC, MCSP, AACP  
State Registered Physiotherapist

Specialising in the treatment of:

- Sports injuries
- Back and neck pain
- Rehabilitation following joint replacements, surgery and fractures

To book an appointment please call - 07939 646030  
Leigh Surgery, Village Hall, High Street Leigh TN11 8RL



## Foot Care

Alice Neale

BSc (Hons) RCPod

Health & Care Professions Council registered

**Chiropodist / Podiatrist**

**Tel: 01732 832524 Local resident**

*A caring and gentle approach to your feet*

## ARBORICULTURAL & LANDSCAPE CONTRACTORS

All aspects of domestic & commercial tree surgery

Woodland management & site clearance

Firewood sales & woodchip production for biomass

Fencing supplied and erected

Hard landscaping and groundworks



# RWE

[www.rwers.co.uk](http://www.rwers.co.uk) **RURAL SERVICES**

T: 01732 746 281

E: [office@rwers.co.uk](mailto:office@rwers.co.uk)

Local Business

Public Liability Insurance

All Pigs Safety certified equipment

## BOUNCY CASTLE HIRE

Affordable Bouncy Castle Hire

**07768367534**

[RODMILLCASTLES.COM](http://RODMILLCASTLES.COM)

## BARKAWAY

[buildandlandscape.co.uk](http://buildandlandscape.co.uk)

- All Types of Property Refurbishment/Maintenance
  - Block Driveway Specialist including Refurbishment
  - Patios—Stone/Block
  - Hard Landscaping
  - Call for a Free Quotation or Advice—No Obligation
- Other Trades Available**
- 07787 765657**

For a more Professional Finish

In Business In Hildenborough Since 1880



## HEALTHY GARDENS

Operating for over 20 years

GENERAL GARDEN  
MAINTENANCE TO INCLUDE

Hedge trimming, pruning,  
grass cutting and fencing.

Power washing - driveways,  
patios, decking etc.

Fully qualified and insured  
Free estimates and advice

Ring Jim  
07510 527967

## TREE SURGERY

Professional Tree Care Service



Fully Qualified & Insured Team

- ✓ Felling and Stump Removal
- ✓ Storm Damage Cleanups
- ✓ Crown Thinning, Lifting and Reduction
- ✓ Hedgecutting

Get In Touch for Free Consultation and Advice

T: 01342 851 385 M: 07808 645 800

W: [www.katsuragardens.co.uk](http://www.katsuragardens.co.uk)

E: [philip@katsuragardens.co.uk](mailto:philip@katsuragardens.co.uk)

  
**KATSURA GARDENS**  
LANDSCAPING & TREE SURGERY



**Ryan King**

M: 07917 414261

E: [ryanking13@btinternet.com](mailto:ryanking13@btinternet.com)

Garden Maintenance - Woodland Management

Stump Grinding - Tree work

Hedge Trimming - Mowing

Fencing

-- Fully Insured --

Locally based in Tonbridge



City &  
Guilds  
NPTC

## Adam's Gardens

*General Garden Maintenance*

*Renovation | Expert Pruning*

*Ideas & Inspiration*

*Plant Advice/Supplies*

07957 461958 / 01732 846796

[adamurgardender@aol.com](mailto:adamurgardender@aol.com)



**GARY THE GARDENER**

Friendly gardening service  
for local residents.

T: 01732 833303 M: 07939 220283

E: [g.kempston@btinternet.com](mailto:g.kempston@btinternet.com)

## HEVER LANDSCAPES LTD.

Year-round garden management,  
regular maintenance or a one-off  
garden tidy/clearance.

Complete landscaping projects, such as  
paths, patios, retaining walls, all types of  
fencing, turfing/seeding, hedge  
cutting and hedge laying.

PLEASE PHONE KARL ON 01892 740

133 OR 07909 916 909

[WWW.HEVERLANDSCAPES.CO.UK](http://WWW.HEVERLANDSCAPES.CO.UK)

# HILDENBOROUGH

## SERVICING & MOT

### EXCLUSIVE SPECIAL OFFERS

#### OFFER 1

MOT and Service £179+VAT

#### OFFER 2

MOT, Service & 6mths  
Warranty £249+VAT

#### OFFER 3

MOT, Service & 12mths  
Warranty £349+VAT



Your Trusted Partner  
for Quality Car Care

Unit 2 Brookside Industrial  
Estate, London Rd,  
Hildenborough, Tonbridge  
TN11 9ND

Service may differ slightly depending on engine oil used on the make of car. Warranty will NOT cover items identified on the MOT or service but will cover all parts and labour on covered items from the interception of the warranty.

# 01732 838 004

**JAMES MILLARD**  
INDEPENDENT ESTATE AGENTS

## SOLD

Hildenborough

(01732) 834835

[www.jamesmillard.co.uk](http://www.jamesmillard.co.uk)

The leading agent selling homes in  
Hildenborough and the surrounding area

### LOCAL KNOWLEDGE YOU CAN TRUST

Member of the Guild of Professional Estate Agents



**rightmove**.co.uk  
The UK's number one property website

**Zoopla**  
Smarter property search



Riding Corner, 178 Tonbridge Road, Hildenborough, Kent TN11 9HP Email: [hildenborough@jamesmillard.co.uk](mailto:hildenborough@jamesmillard.co.uk)



**CAVENDISH  
FOR SALE**

01732 464498  
[www.cavendish.co](http://www.cavendish.co)



**CAVENDISH**

LETTINGS, SALES & PROPERTY MANAGEMENT

**YOUR LOCAL PROPERTY  
EXPERTS SINCE 1994.**



**CAVENDISH  
TO LET**

01732 464498  
[www.cavendish.co](http://www.cavendish.co)

# HILDENBOROUGH BODYWORX

Specialist in Accident Repair and Custom Finishes

All types of bodywork catered for:-  
Full spraybake facilities - Full resprays  
Accident damage repairs  
Paintless dent removal  
Custom airbrush art  
Courtesy car available

Vehicle Preparation  
Local business, based in Leigh

T: 01732 833 214

M: 07748 662 272

info@hildenboroughbodyworx.com

www.hildenboroughbodyworx.com

**Sarah Crockford**

**Reward-based  
dog trainer &  
pet behaviourist**

**07805 855069**

**Classes and one-to-ones**

[www.sarahcrockford.com](http://www.sarahcrockford.com)

[www.facebook.com/HelpingPetMinds](https://www.facebook.com/HelpingPetMinds)



## DEXTER'S DOG GROOMING



172 Tonbridge Road, Hildenborough, TN11 9HP

1-2-1 Dog Grooming by Ashleigh Brown

Fully insured and qualified

Level 2 and 3 City and Guilds Dog Groomer

By appointment only

Call, text or WhatsApp: 07760199971

E-mail: [dextersdoggrooming@hotmail.com](mailto:dextersdoggrooming@hotmail.com)

Facebook: Dexter's Dog Grooming

## Services

- GROUP DOG WALK
- SOLO DOG WALK
- DROP INS
- PET VISITS



## Price List

- GROUP WALKS (1 HOUR) - £15
- ADDITIONAL DOGS FROM THE SAME HOUSEHOLD - £10
- SOLO WALK - £22
- DROP-IN VISIT (UP TO 20 MINUTES) - £12
- PET VISITS (1 HOUR) - £22
- SUBSEQUENT HOUR - £17

**07596323025**

FB/IG:

JACKIE'S PAWS OUTDOORS

## COMMUTER PARKING

@ The Cinnamon Square

DAILY - WEEKLY -  
MONTHLY

*From £1.30 per day*



### Pay By Phone

Visit [t2p.uk](http://t2p.uk),  
enter the  
site 1711, or  
scan the QR  
code &  
follow the  
instructions





## THE AERIAL MAN

(inc. 1<sup>st</sup> class Aerial Services)

**Family Run Business**

**Welcome to the Digital age**

**H.D.REALITY DIGITAL**

**AERIAL INSTALLATION**

**NO CALL OUT CHARGE**

**SPECIAL RATES - OAPs**

**IN HILDENBOROUGH**

**07436 564 897**

**CCTV Home Security/  
Neighbourhood Watch**



## Your Local Technology Expert

**TV Wall-Mounting, WiFi Solutions,  
HiFi & Music Systems, Indoor &  
Outdoor Lighting Control, Home  
Cinema, Garden Speakers, Smart  
Home Automation & Control  
and more!**



Call or text **Rudi** on **07403 660015**  
or email **rudi@commandav.co.uk**

Visit **CommandAV.co.uk** to request a **free quote**,  
**book a demo** or discuss your project. Repairs &  
maintenance of existing systems also carried out.



**COMMAND**



## **Hazell Electrical**

We have proudly provided domestic, commercial and industrial  
electrical services for over 30 years

**MCS and NICEIC Part P Registered**

**We now offer:**

**Solar Photovoltaic Systems | Energy Storage Systems | EV Chargers**

**Contact Mark for a free estimate**



**07774 607800**



**info@slhazell.com**



**www.hazellelectrical.co.uk**



**11 Foxbush, Hildenborough, Kent TN11 9HT**



# Snippits

Unisex hair salon  
01732 833 328

172 Tonbridge Road  
Hildenborough TN11 9HP

## Ear Wax Removal

Micro Suction  
By  Claire

Mobile Ear Wax Removal service in Sevenoaks and surrounding areas

Home visits available at £70 for both ears

For all enquiries:

07870 822936

## HALES CONSTRUCTION LTD

Local reliable building company

Extensions, refurbishments, new builds, garage conversions, kitchens, bathrooms, fascias/soffits & gutters, roofing & glazing

**FREE ESTIMATES**

**Tel: 01732 838 180**

Dan Hales 07765 222 246

halesconstructionltd@hotmail.com



## C.S Electrical

– Small home electrical jobs & PAT Testing –

**Charlie Smith**

☎ 07865 765 324

✉ charliesmithelectrical@gmail.com



derryn  
morton

holistic and beauty  
therapies

Derryn Morton FFHT  
telephone 07932 733 224  
derryn.morton@outlook.com  
www.dmtherapist.co.uk



## S J ELECTRICAL

**Mr Shaun Simmons**

For all your electrical  
requirements large or small:

Consult your local established experts  
**without obligation**

**'Your satisfaction is our business'**

61 Mount Pleasant Road  
Weald, Sevenoaks TN14 6QB  
Mob: 07956 962 428 Tel: 01732 742 144

- 11+ and Entrance Exam Preparation
- Qualified Teacher with over 24 years of experience
- 1:1 tuition, holiday workshops and mock exams

Contact:

Rebecca Corden  
www.westkenttutor.co.uk  
westkenttutor@hotmail.com  
07931 320513



**WEST KENT  
TUTOR**

# D. Sands Services

Heating & plumbing

Mobile: 07721 057 680

Telephone: 01732 354 771

## PROMOTION - SAVE ON FUEL BILLS

Adding a top brand inhibitor to your central heating system is a priority in benefiting from:

- \* Reducing running costs
- \* improving performance
- \* cutting down maintenance
- \* extending boiler life

We are now promoting all the above for a system up to 14 radiators at £125.00

This also includes advice on how to run your system at its most economical - which can be some very simple changes you can make, in helping you keeping those high fuel costs down.



### IAN HOLLOBOON HEATING & PLUMBING

All Domestic Plumbing  
Full Heating Design & Installation  
Landlord certificates & safety inspections  
Unvented Cylinders and  
Accumulators



Tel: 07887 726 275

[hollobon@virginmedia.com](mailto:hollobon@virginmedia.com)

## P.W.STURMER ROOFING

TILING SLATING MOSS CLEARING  
FASCIAS SOFFITS GUTTERING  
STABLES GARAGE ROOFS  
AGRICULTURAL AND INDUSTRIAL  
ROOFING

Phone PAUL on: 01732 833 401  
or mobile: 07860 483 355



SANDERSON ROOFING

Stuart Nicholson  
07825999167

[sandersonroofing@gmail.com](mailto:sandersonroofing@gmail.com)  
[www.sandersonroofing.co.uk](http://www.sandersonroofing.co.uk)

Pitched and flat roof specialists

- High performance felt roofs
- Upvc fascias and soffits
- Guttering
- Slating and tiling repairs
- Roof renewals
- Chimney works
- All types of lead work
- Emergency call out work
- Free estimates and a written guarantee on renewals
- All at a price you can afford!



**Commercial and Domestic  
Groundwork and Paving  
Contractors**

Operated  
Machine Hire  
available

Call now!  
01732 832205  
07855 458770



**Hever Care**

We specialise in visiting and live-in care at home - helping people to live the life they choose.

- ✓ Visiting home care from £25/hour
- ✓ Personal care, medication support, mobility
- ✓ CQC-regulated and quality assured care

Call us: 01732 207944 | [www.hevercare.co.uk](http://www.hevercare.co.uk)

✓ Covering Hildenborough, Tonbridge and Tunbridge Wells



*Let our family take care of yours...*





# Samsian Ltd

Central Heating & Boiler Engineers

Gas \* Oil \* LPG

*"you may not need a local &  
reliable boiler engineer today,  
just remember our name  
for the day you do"*



**Service Installation Repair**



01732 885882

[www.samsian.co.uk](http://www.samsian.co.uk)



## Wasp Treatment

Taking the sting out of summer

**andy.wasp**

Wasp & Wasp nest treatment

Fast, Efficient & Reliable

Mobile: **07833 558 773**

Email: [andy.wasp@yahoo.co.uk](mailto:andy.wasp@yahoo.co.uk)

Tonbridge area  
Postcodes  
TN9, 10, 11



**HANDYMAN**

ANT'S HANDYMAN SERVICE

- Friendly and Professional Service
- Discounts for Elderly and Disabled
- Ring for a **FREE** Quote/Consultation

**07506 769 608**



@antshandyman-service

Repairs / Painting / Renovations /  
Wardrobes / Woodwork / Electronics /  
Lighting / Gardening / Flooring /  
Assembly / Metalwork ....



## McDonnell Plastering and Decorating Ltd

Skimming over artex  
All interior and exterior decorating  
General property maintenance

Re-skims  
Coving  
New Ceilings

Contact us for a free estimate on:  
**01732 300 284 or 07770 667 915**

Email: [patmcdonnell@blueyonder.co.uk](mailto:patmcdonnell@blueyonder.co.uk)

### GORDON PATERSON

#### PROPERTY MAINTENANCE

#### Celebrating 40 years in business

Glass replacement inc. broken or misted double glazing units. Maintenance of PVC windows, doors, locks, handles.

General property maintenance, painting & decorating. DIY SOS including flat pack assembly.

Contact Gordon Paterson for quotations on:

Telephone: **07836 262 833**

Email: [gordonpaterson21@gmail.com](mailto:gordonpaterson21@gmail.com)



**J.R. BRICKWORK**  
& LANDSCAPING

All aspects of brickwork

• New builds • Extensions • Garden walls • Footings • General landscaping

07585 952531 | Enquiries@jrbrickwork.info

## P J Richardson

**Carpenter / General**

**Property Maintenance**

**01892 870 714**

**07739 932 043**

### GLASS EXCHANGE

#### Double Glazing Repairs

Having problems with condensation between your double-glazed units?

We replace just the glass – not the frames

We specialise in all types of repairs

Door Locks, Door Handles, Letter Boxes,  
Window Hinges, Cat Flaps, Window Keys,  
Double Glazing, Patio Rollers

Free Quotations Tel: **01732 849 191**  
277 London Road, West Malling, ME19  
5AE

# HILDEN CARPENTRY

BESPOKE CUPBOARDS  
ALCOVE UNITS  
SHELVING

JOINERY PROJECTS CONSIDERED

CONTACT RAY:  
07547 672739  
HILDENCARPENTRY@BTINTERNET.COM

BASED IN HILDENBOROUGH



Blue screen? System keeps crashing, slow system, updates fail? Infected by a virus? Scammed. Disk crash. Upgrades Network installations. Resolve power up issues. Clean the system after a virus attack. Recover data from failed-disk. Health checks. Custom built PCs. System backup advice. Confused? I have 35 years experience in the IT industry  
Contact Mike on 07720-068292  
[mikephowells@gmail.com](mailto:mikephowells@gmail.com)  
[www.mphcomputing.co.uk](http://www.mphcomputing.co.uk)

## Bespoke Picture Framer

TRADITIONAL FRAMING  
MEDALS, PHOTOGRAPHS, ARTWORKS, TAPESTRIES, ETC.

FREE COLLECTION AND DELIVERY SERVICE

[WWW.RAYGOODWINPHOTO.CO.UK](http://WWW.RAYGOODWINPHOTO.CO.UK)

CONTACT RAY:  
07547 672739

OR CALL IN TO HILDENBOROUGH FARMERS' MARKET  
EVERY TUESDAY!

BASED IN HILDENBOROUGH



## Piano Teacher

Claire Rawlinson

MA Cantab  
DipABRSM

Piano lessons for children and adults

Email: [c.c.rawlinson@btinternet.com](mailto:c.c.rawlinson@btinternet.com)

Tel: 01732 834 896

Member of the Independent Society of Musicians



Residential and  
Commercial  
window cleaning

## WATER WORKS WINDOWS

Call: Fergus Brady  
T: 07890 685912



FREE LOCAL CALL OUT COMPETITIVE PRICES

## Alistair Colenutt

*Repairs to Washing Machines,  
Tumble Dryers, Dishwashers,  
Electric Cookers*

Evening and Weekend Calls Welcome

Mobile - 07748 857 161

Landline - 01732 355 697

[alistairjc@hotmail.com](mailto:alistairjc@hotmail.com)

## BED & BREAKFAST



This beautifully restored  
19th century barn consists of  
3 lovely self-contained suites.  
Each contains a bedroom  
with en-suite shower, plus  
separate sitting room  
with sofa bed and TV.

For rates and availability contact Debra Farish.

## THE BARN AT WOODVIEW

London Rd, Hildenborough TN11 8NQ

T: 01732 833167 E: [thebarn.woodview@talktalk.net](mailto:thebarn.woodview@talktalk.net)  
[www.thebarnatwoodview.co.uk](http://www.thebarnatwoodview.co.uk)



## PLAXTOL PEST AND WILDLIFE MANAGEMENT

## 07368 605762



[INFO@PLAXTOLPEST.CO.UK](mailto:INFO@PLAXTOLPEST.CO.UK)  
[WWW.PLAXTOLPEST.CO.UK](http://WWW.PLAXTOLPEST.CO.UK)



# Local Directory

## Church Contacts

Home (Connect) Groups  
Prayer Chain  
Bright Sparks, (Mondays, term-time)  
Generation Creation (Sundays)

Church Office **01732 833 596**  
Cynthia Fawcus **01732 833 397**  
Lisa Glasscote **01732 833 596**  
Lisa Glasscote **01732 833 596**

## Community Groups

Evening Women's Institute  
Beavers (Ages 6-8) Thurs 5.15-6.30 pm  
Cubs (Ages 8-10.5) Monday 6.30-8 pm  
Scouts (Ages 10.5-14) Friday 7.30-9 pm  
Guides

Miss Lorna Stapley - **07960 174 789**  
**hildenboroughbeavers8thtonbridgescouts@hotmail.com**  
**hildenboroughwolfcubs@gmail.com**  
**8thtonbridgescouts@gmail.com**

Brownies  
Hildenborough Amateur Dramatics  
Hildenborough Conservation Group  
Hildenborough Farmers' Market  
Hildenborough Gardeners' Society

Sharon Roberts - **07960 782 178**

**hildenbrownies@outlook.com**

Hildenborough History Society  
Village Preservation Society  
Hildenborough Litter Pickers  
Hildenborough Parish Council  
Hildenborough CofE Primary School  
Stocks Green Primary School  
Stocks Green Pre-School

Rich Lake - **07579 210 122**

Mrs Lynne Flower **01732 355 080**

**managerhildenboroughfm@gmail.com**

David Haugh **01732 832 869**

Tracy **hildenboroughhistorysociety@yahoo.co.uk**

David Vanns **01732 835 289**

Emily Simons **07715 113 899**

Louise Jenner **07818 329 029**

**www.hildenborough.kent.sch.uk - 01732 833 394**

**www.stocksgreenprimary.co.uk - 01732 832 758**

**www.stocksgreenpreschool.co.uk - 01732 834 115**

**www.oaksnursery.org.uk - 01732 834 401**

Hilary Macnamara - **07598 927 953**

**wkcb@muzodo.com**

**0345 988 1188**

**0800 952 1001**

**jonathan.ashton.bidwriting@gmail.com**

Oaks Nursery

Village Hall Bookings

West Kent Concert Band

Floodline

Southern Water (spillage reporting)

Hildenborough Speedwatch

**KENT POLICE (Non-emergency calls) 101**

## Hildenborough Sports

Badminton

Kathryn Stewart **07809 299 553**

Indoor (Short Mat) Bowls Club

David Chambers **01732 833 612**

Hildenborough Cricket Club

Barry Webb **01732 838 422**

Hildenborough Friendly Badminton Club

Ivan Kirkpatrick **07730 888 429**

Stoolball Club

Lauren Welch **07999 604 213**

Tennis Club (membership)

**www.hildenboroughtennis.co.uk**

Hildenborough Road Races

Amy Pay - **hildenroadrace@gmail.com**

Tonbridge Swimming Club

**chairman@tonbridgeswimmingclub.co.uk**

Tonbridge Bridge Club

Lionel Shields **01732 355 919**



# Hilden Park

Chartered Accountants



## MAKING TAX DIGITAL (MTD) FOR INCOME TAX

Making Tax Digital for income tax (MTD IT) will become mandatory for many sole traders and landlords from 6 April 2026 if your qualifying income from self-employment and property exceeds £50,000 in the 2024/25 tax year. It will change how you keep records and report income, and it will affect the way you plan your cashflow and manage deadlines.

Instead of keeping paper records and filing one self-assessment tax return each year, you will:

- keep digital records of income and expenses

- send quarterly summary updates to HMRC from compatible software
- make end-of-year adjustments and send a final declaration through that software.

HMRC defines "qualifying income" for MTD as your total gross income in a tax year from self-employment and property, before expenses or tax.

These are significant changes. Early planning will give you the best opportunity to adapt smoothly and avoid any last-minute challenges.

If you would like any advice,  
please contact us on 01732 838877

Visit our website

[www.hildenparkaccountants.co.uk](http://www.hildenparkaccountants.co.uk)

✉ @HildenPark    📷 @hildenparkaccountants

Quote "Keys" to receive a  
free 12 month Xero subscription\*

\*New client offer only





CITRUS  
FINANCIAL

## Is your money working as hard as you?

Recent research shows that more than £600 billion is sitting idle in UK savings. Money that could be working harder to grow wealth and beat inflation.

Keeping too much cash in the bank might feel safe but it could be costing you in the long run. At Citrus Financial, we'll help you find the right balance between security and growth, so your money works for you, not against you.

**Let's make your money work harder.**

Call us for a free financial consultation and get some clarity, confidence and control over your finances.

The value of pensions and investments can fall as well as rise and you can get back less than you invested.

**T: 01732 834834**

**E: [advice@citrusfinancial.co.uk](mailto:advice@citrusfinancial.co.uk)**

**[www.citrusfinancial.co.uk](http://www.citrusfinancial.co.uk)**

- \* Mortgages
- \* Pensions
- \* Financial Planning
- \* Investments
- \* Insurance

Citrus Financial Services Ltd  
2nd Floor  
Watermill House  
Chevening Road  
Chipstead  
Sevenoaks  
Kent TN13 2RY

